

How we can build healthy, liveable communities?

Adam Harrison, Transport for West Midlands (TfWM)

West Midlands Combined Authority Vision:

*To drive inclusive
economic growth in the
West Midlands region and
enable a healthier,
happier, better connected
and more prosperous
population*

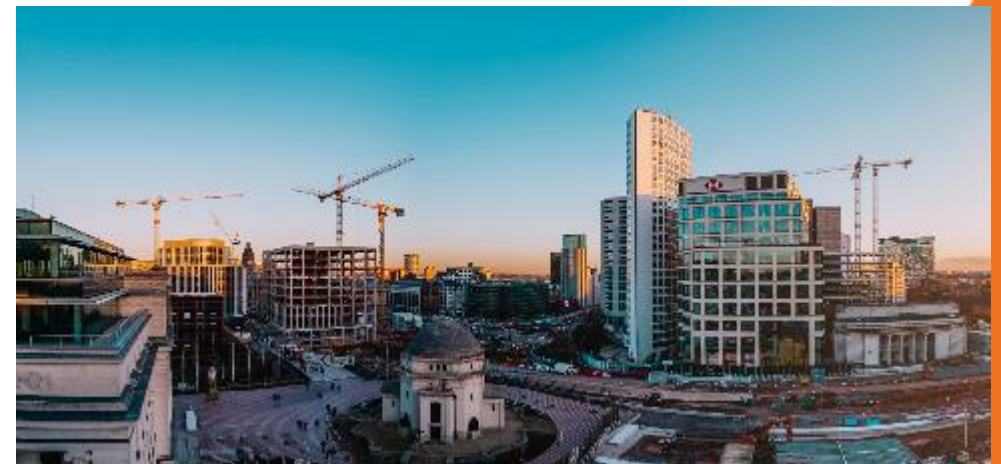


West Midlands
Combined Authority



A West Midlands Renaissance

- Sustained economic growth
- Two of the Top Five most Entrepreneurial Cities (Birmingham and Coventry)
- Londoners moving to the West Midlands
- Changing face of our towns and cities
- Above average housing delivery rates
- Cultural pride: Coventry City of Culture and Birmingham 2022 (CWG)
- Devolution is changing the way we deliver



Big challenges



1,473

Deaths per year related to air pollution,
of which transport is a major contributor.



41%

Of all car journeys are
within 2 miles



216,000

Fewer people are within a 45 minute bus journey
time of Birmingham city centre compared to
2008 because of congestion

- Everyone not benefitting from regional growth
- Short of affordable housing
- Increased homelessness
- Climate Crisis
- Skills levels below national average
- Increased congestion and poorer air quality
- Less active lifestyles
- How will future mobility impact the transport sector and future housing?

Transport for West Midlands

- Transport arm of the WMCA / covers WMCA Constituent Area
- Adopted statutory Strategic Transport Plan
- Also promotes strategic transport interventions to deliver on skills, housing, regeneration
- Works closely with WMCA's LA's, Non-Constituent Authorities and LEPs
- Also works with bodies such as West Midlands Rail Executive and Midlands Connect
- New devolved powers



Our transport network



We keep traffic flowing on some of the busiest roads by managing

605km Key Route Network



21km

We own & operate Midland Metro which covers 21km/26 stops and are expanding the network by approx' 34km



40m

40m journeys were made using the Swift payments in 2018, it is the largest smart card system outside of London



We are working to rebuild up to 7 rail stations and reopen 2 lines



We manage 38 rail station car parks circa 9,000 spaces



We fund subsidised buses to cover socially necessary services that are not provided on a commercial basis



We manage 12 bus stations, maintain almost 12,000 bus stops and 1,750 RTI displays

Patronage Figures (2018)



262m

Bus



58m

Rail



7m

Metro

Current Population



2.86m

WMCA Constituent authorities

4.58m

WMCA Constituent & non constituent authorities

Projected to increase by 440k by 2035

34% of WM residents are aged 0 to 24

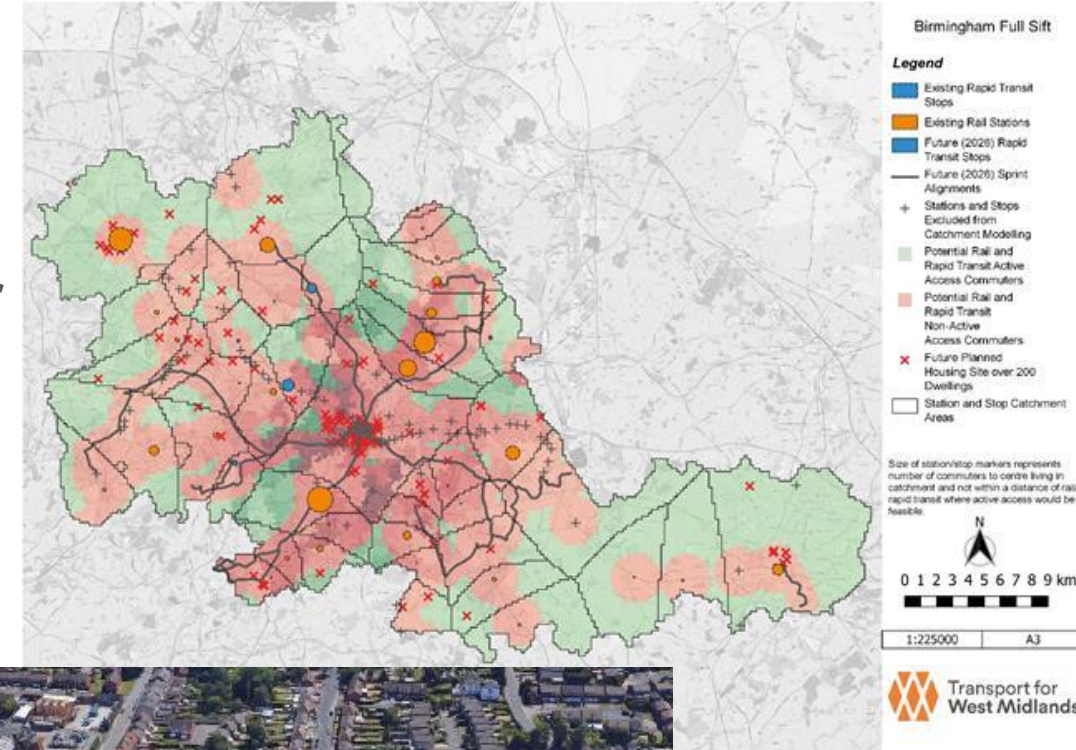
Most ethnically diverse area outside of London with a 30% BAME population

Approach: Inclusive and Better Places



New approach to Housing & Transport

- **215,000** new homes by 2031
- Increased **affordable and social housing**
- Step change in design quality - **Design Charter**
- Non-statutory **Spatial Investment & Delivery Plan**
- £100m **Brownfield Land Fund** to unlock 8,000 homes
- **£250m Housing Infrastructure Fund:** unlocking transport infrastructure - **Perry Barr Station and wider Athletes Village**
- **Town Centre Task Force**
- **Corridors and Town Centre Delivery Plans**



Aligning Housing, Transport, Digital & Clean Growth Investments

£321m



£695m



Walsall to Wolverhampton (W2W)

- **Brownfield first** commitment
- Unlocking over 4,000 new homes
- Commitment to re-open passenger rail service between the City and the town
- New rail stations at **Willenhall** and **Darlaston**
- Growing population and economic opportunity
- Clear ambition from Local Authorities and partners
- Recognised location for investment



Commonwealth Games: Perry Barr

- Creating **£370m Athletes Village**
- Accommodate 6,500 athletes and officials
- Former BCU campus demolished
- New residential quarter
- A34 Walsall to Birmingham Sprint-BRT
- Investment in the rail station
- Active travel, cycling & public realm
- Games legacy: **4,000 new homes and transformational transport improvements**



West Bromwich to Dudley

- New Metro spine – transforming connectivity
- **£449.5m investment**
- **Phase 1 of a Metro “Crossrail”** connecting across the WMCA
- Accelerating housing delivery
- Strong Town Centres
- Expanding colleges – anchor institutions
- Capability in new construction technologies

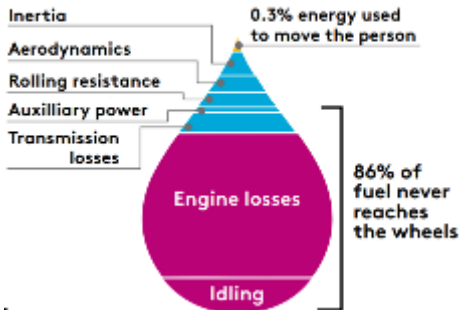


Need for shift in mobility

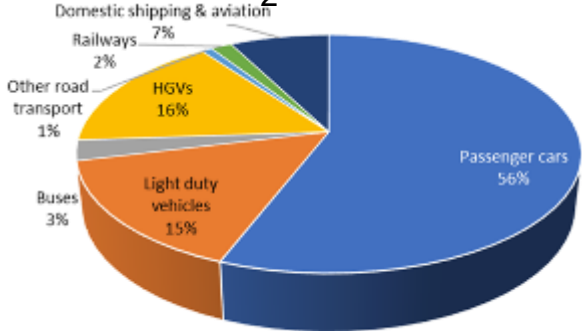


62% of car trips are as a lone driver

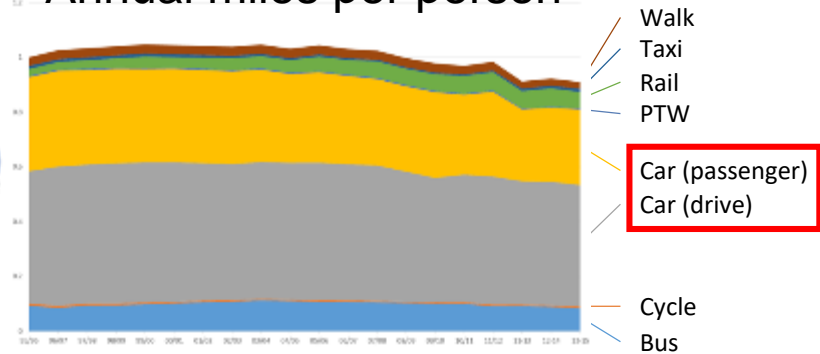
Energy flow through a combustion engine



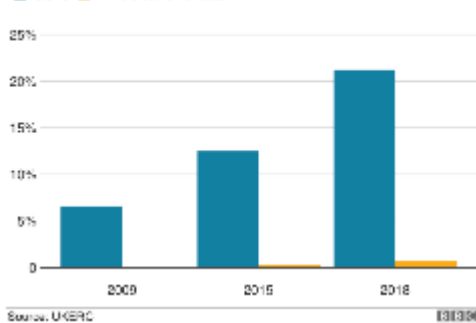
CO₂ emissions



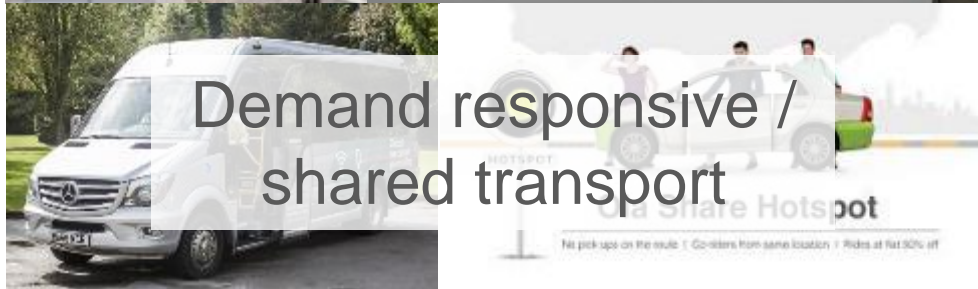
Annual miles per person



Growth in SUV and pure electric sales
Percentage of new cars sold in the UK



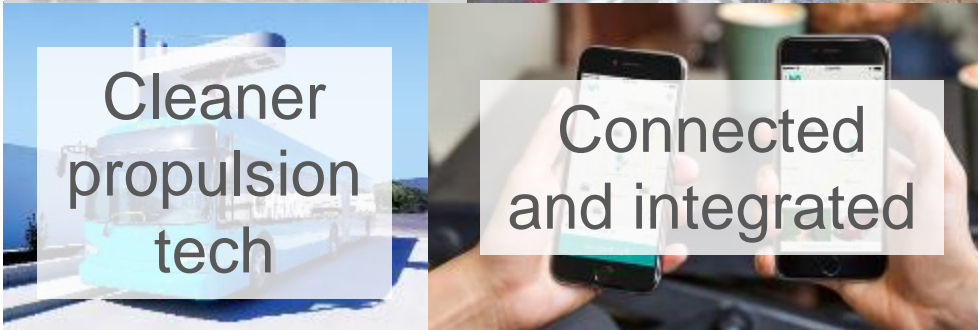
Active and mass transit



Demand responsive / shared transport



Smaller/micro mobility

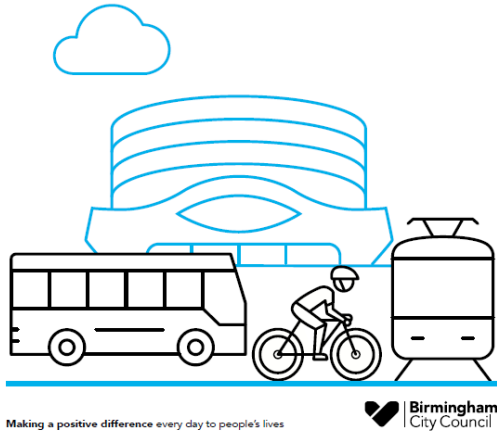


Cleaner propulsion tech

Connected and integrated

January 2020

BIRMINGHAM TRANSPORT PLAN



Proudly
Delivering



West Midlands
Combined Authority

Greater certainty - We can do MORE

- Continuing to seek longer term, integrated planning
- WMCA right vehicle to lead - working with Local Authorities
- New policy opportunities: #WM204, Energy Zones and developer planning guidance
- Combining Housing, Transport, Digital and Clean Growth plans
- Exploring further devolved funding and powers i.e. Single Pot Infrastructure Fund
- **Goal: unlock inclusive growth**



ENERGY CAPITAL



Adam Harrison BSc (Hons), MSc
Transport for West Midlands
Principal Policy & Strategy Officer - Transport
E: adam.harrison@tfwm.org.uk
T: 0121 214 7316