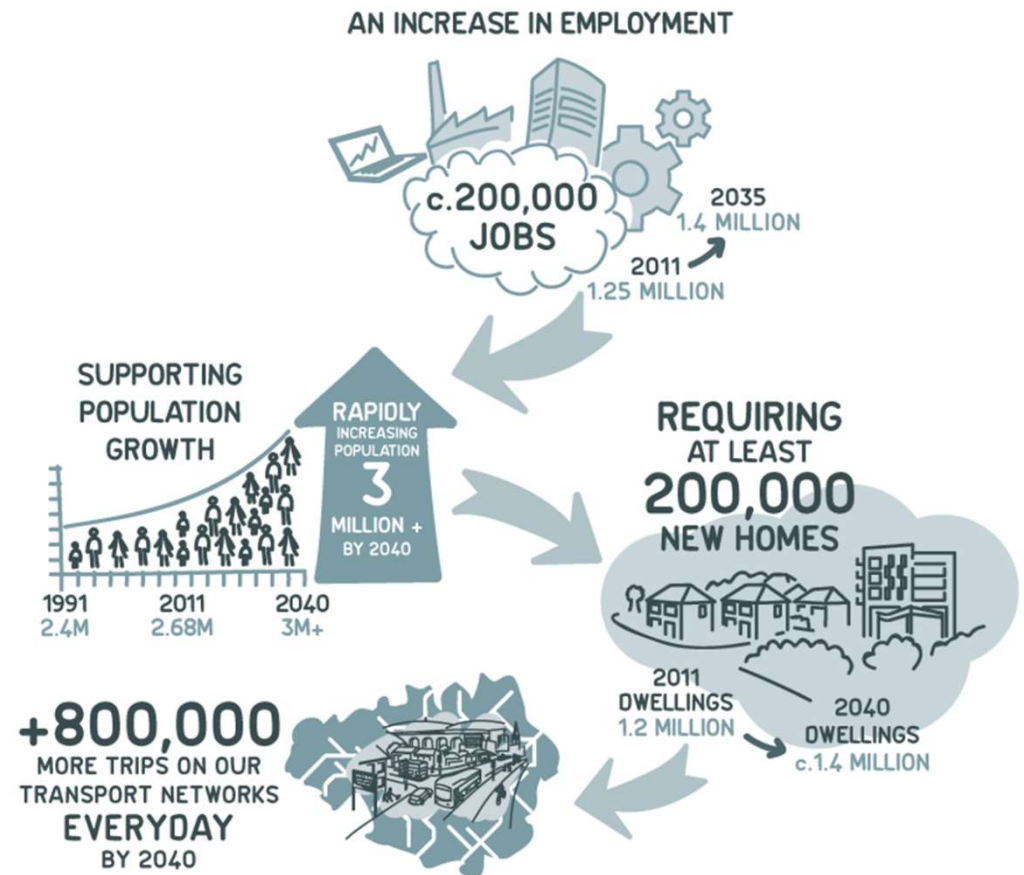


Supporting the Development of Healthy Liveable Communities

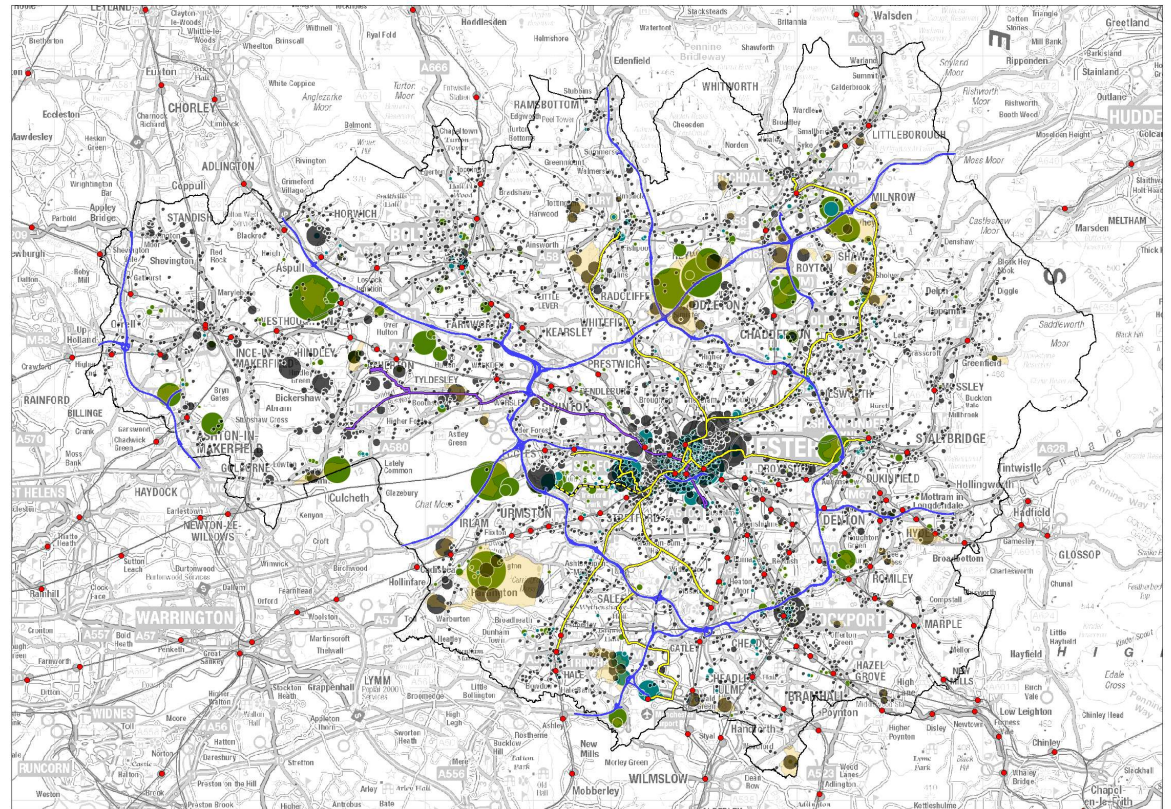
Simon Warburton, Transport Strategy Director,
Transport for Greater Manchester

GREATER MANCHESTER IS GROWING

SUPPORTING SUSTAINABLE ECONOMIC GROWTH



GREATER MANCHESTER SPATIAL FRAMEWORK



- Sets out how GM will accommodate an additional 227,000 houses in the period to 2040.
- Majority of housing growth in existing urban areas – in particular Manchester/Salford City centre, Salford Quays and centres of main towns

KEY LOCATIONS: REGIONAL CENTRE



KEY LOCATIONS: TOWN CENTRES



KEY LOCATIONS: URBAN FRINGE





**Supporting
sustainable
economic growth**



**Improving quality
of life for all**



Transport Vision

**World class connections
that support long-term,
sustainable economic
growth and access to
opportunity for all**



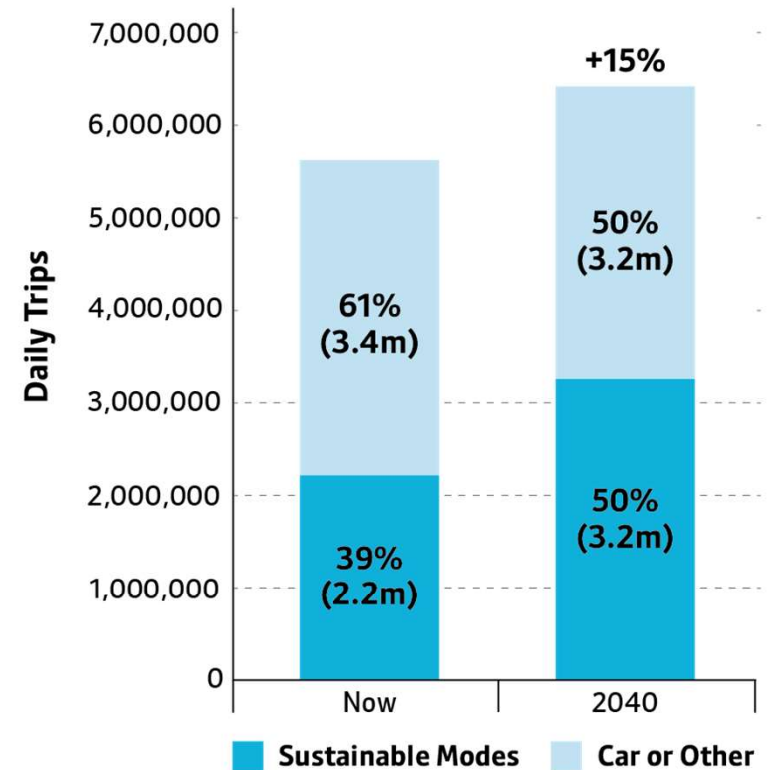
**Protecting our
environment**



**Developing an
innovative city-
region**

Five Year Delivery Plan - Achieving our vision

Our vision is for 50% of all journeys in Greater Manchester to be made by walking, cycling and public transport by 2040.



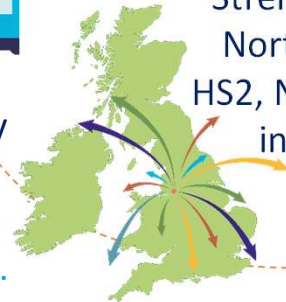
To achieve our vision we must:



Ensure new developments support sustainable transport, and our town centres are pleasant, thriving and well connected.



Maximise efficiency and reliability of our existing transport networks.



Strengthen our position at the heart of the Northern Powerhouse by fully integrating HS2, Northern Powerhouse Rail, and national infrastructure with regional and local networks.



Ensure Manchester Airport and the Airport Enterprise Zone sustainably meets its potential as an international gateway and a GM employment centre.



Make walking and cycling the natural choice for short journeys.



2040 Delivery Plan



Radically transform public transport capacity of the regional centre to benefit the whole of Greater Manchester.

Offer genuine alternatives to the car for travel across the wider city-region, with good orbital connections between town centres.

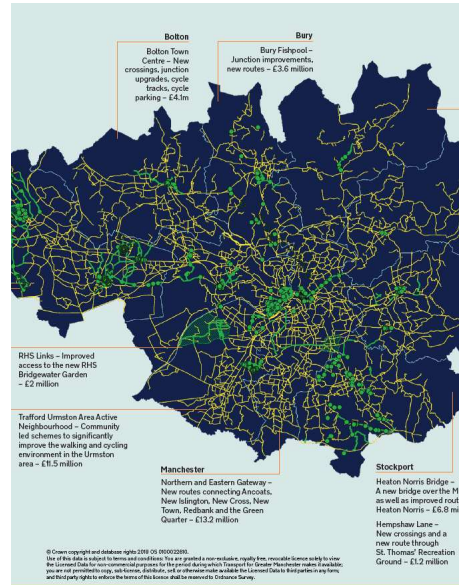


Move and manage freight in the most sustainable and efficient ways.

Research and harness future technology, innovations and digital connectivity.



Rethinking our Streets:



- Made to Move – 15 step plan to transform the way we get around Greater Manchester
- Bee Network – more than 1,800 miles of joined-up walking and cycling routes
- Streets for All – A new approach to the way we look at the street
- Design Guidance

Our streets in Greater Manchester have different roles

← Less Movement
More Place

More Movement →
Less Place



DESTINATION PLACES

Destination places are special places for people to come together, they therefore have very low levels of slow moving vehicles.



ACTIVE NEIGHBOURHOODS

Active neighbourhoods need to be pleasant places to live, where it is easy to access local facilities on foot or bike.



HIGH STREETS

High streets have lots of people and goods moving on foot, by bike and in vehicles. They also need to be stimulating places.



CONNECTOR ROADS

Connector Roads allow people and goods to move between our key centres.



MOTORWAYS & STRATEGIC ROADS

Motorways and Strategic Roads enable people and goods to move quickly over long distances.



Making liveable communities in and around the Regional Centre

- Placemaking
- Streets for All interventions
- Reallocation of road space
- Delivery of the Bee Network
- Improved public transport offer





Making liveable communities in our towns

- Placemaking
- Streets for All interventions
- Reallocation of road space
- Delivery of the Bee Network
- Improved public transport offer





Making liveable communities in new developments

- Walking and cycling and public transport interventions needed to support new sites
- Work with developers on masterplanning to promote the use of sustainable travel choices

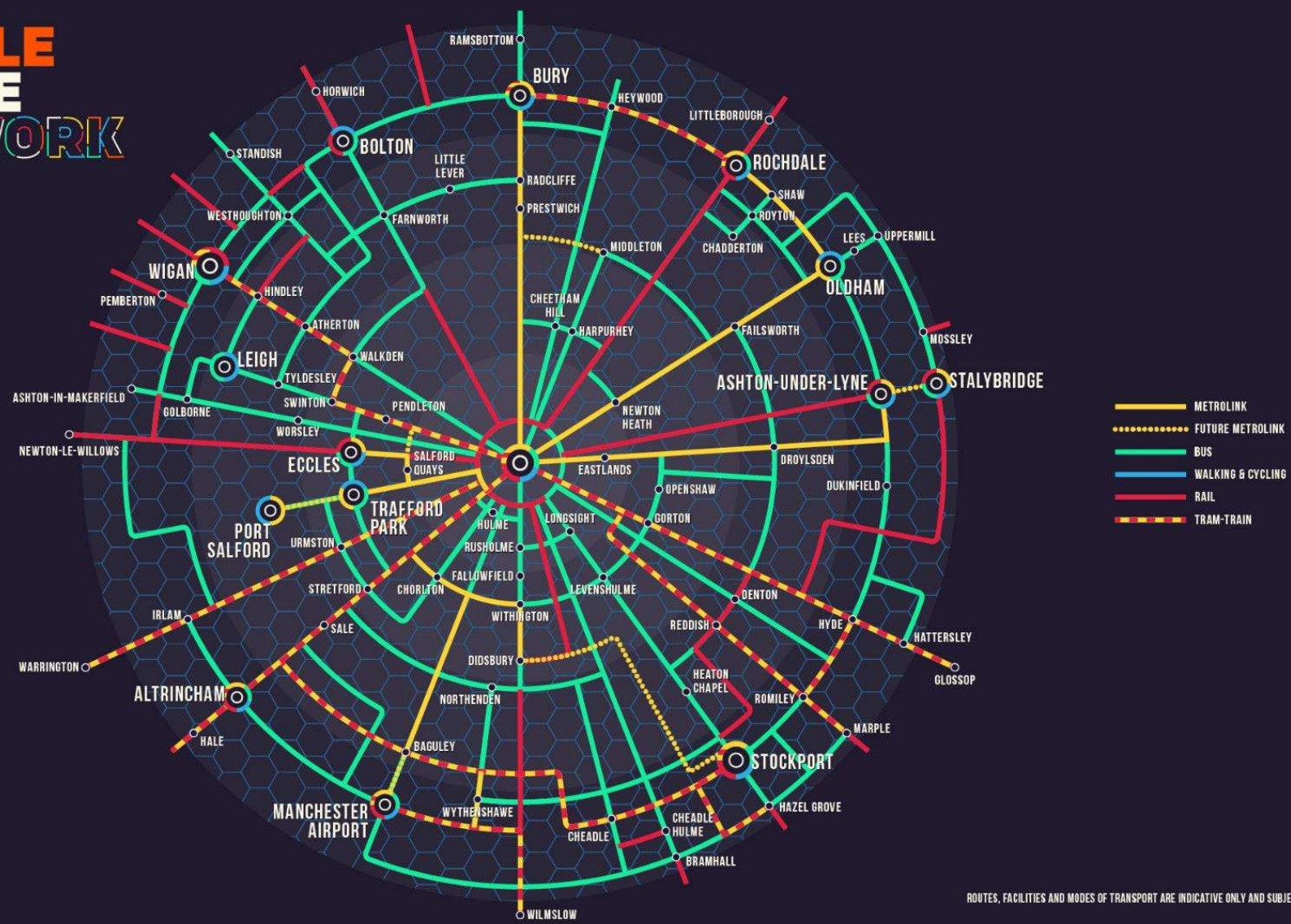


OUR PEOPLE

OUR PLACE

OUR NETWORK

OUR PEOPLE
OUR PLACE
OUR NETWORK



GREATER
MANCHESTER
DOING THINGS DIFFERENTLY

ROUTES, FACILITIES AND MODES OF TRANSPORT ARE INDICATIVE ONLY AND SUBJECT TO CHANGE.